



547225C

Rogowski Flexible current sensors

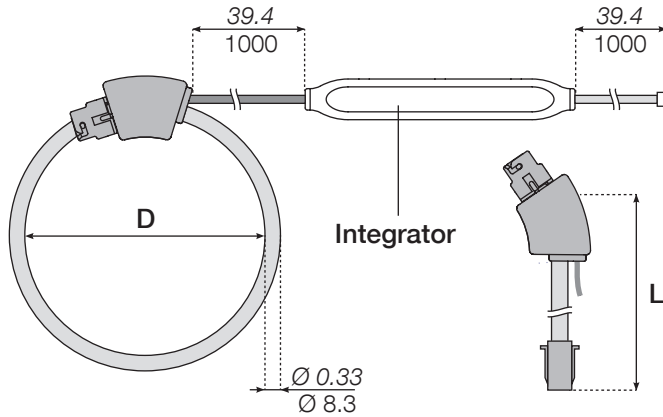
TF



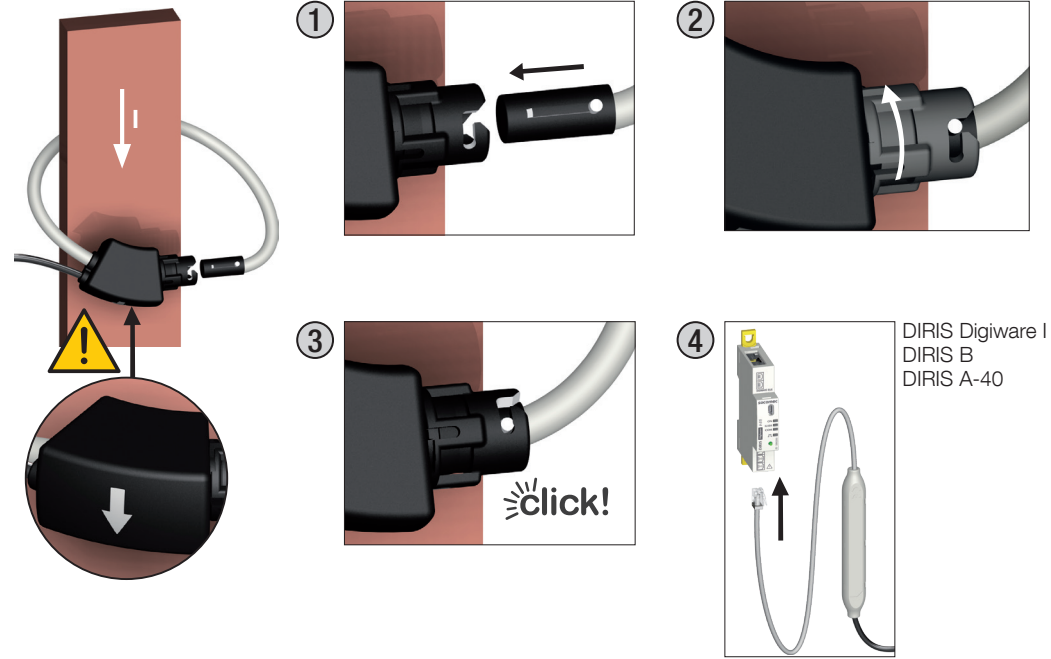
	TF-40	TF-80	TF-120
Ø	40 mm	80 mm	120 mm
I nom.	100 ... 400A	150 ... 600A	500 ... 2000A
Ref.	48290573	48290574	48290575

	TF-200	TF-300	TF-600
Ø	200 mm	300 mm	600 mm
I nom.	600 ... 4000A	1600 ... 6000A	1600 ... 6000A
Ref.	48290576	48290577	48290578

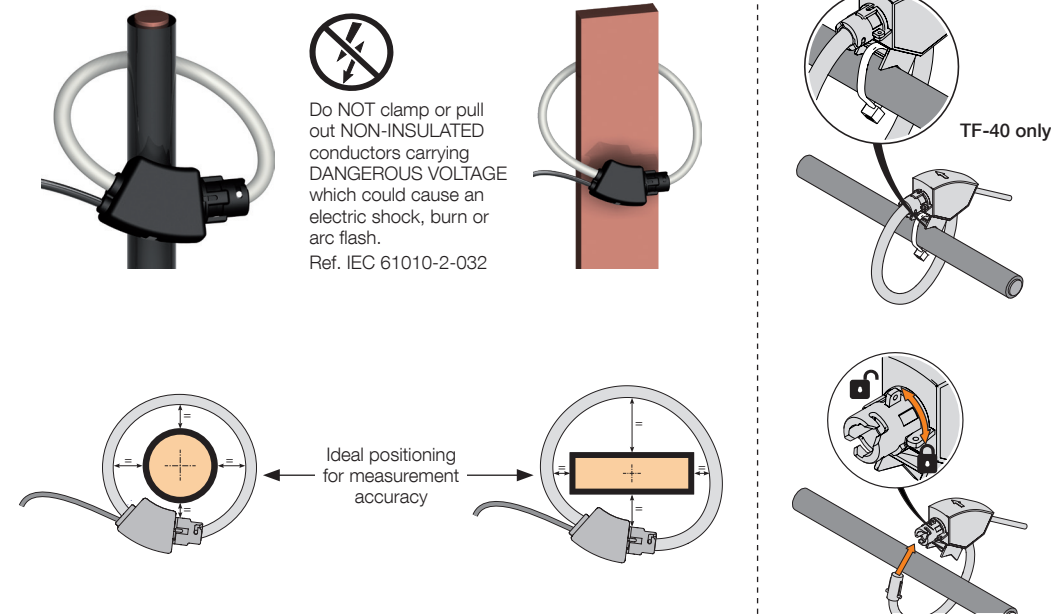
Dimensions in/mm



	TF-40	TF-80	TF-120	TF-200	TF-300	TF-600
D (Ø)	1.57 40	3.15 80	4.72 120	7.87 200	11.81 300	23.62 600
L	4.96 126	9.88 251	14.84 377	24.72 628	37.09 942	74.21 1885
Integrator	5.04 x 0.75 x 0.6 128 x 19 x 15					



DIRIS Digiware I
DIRIS B
DIRIS A-40



Do NOT clamp or pull out NON-INSULATED conductors carrying DANGEROUS VOLTAGE which could cause an electric shock, burn or arc flash.
Ref. IEC 61010-2-032

TF-40 only



Socomec Resource Center
To download, brochures, catalogues
and technical manuals.



