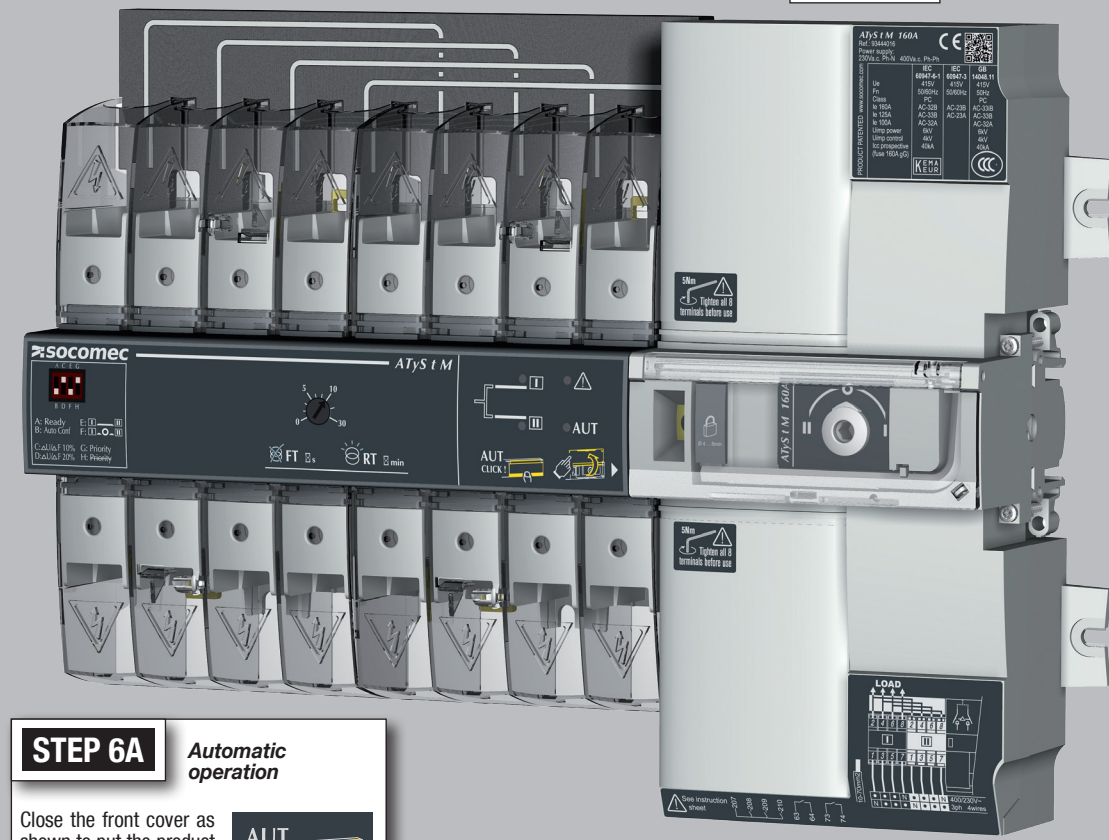
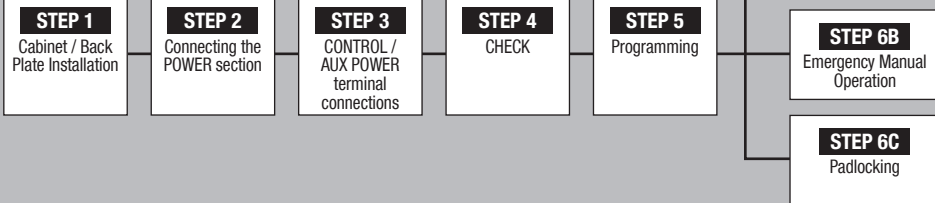


ATyS t M

Automatic
Transfer Switching Equipment

Installation and Commissioning



STEP 6A Automatic operation
Close the front cover as shown to put the product into automatic mode.

STEP 6B Manual operation
Whilst in manual mode, check the wiring and if ok power up the product.

STEP 4 Check
Whilst in manual mode, check the wiring and if ok power up the product.

STEP 5 Programming
Auto conf. of the network voltage and frequency.

STEP 3 CONTROL / AUX POWER Terminals and wiring

STEP 6C Padlocking mode
In order to padlock put the product in manual mode.

STEP 6B Manual operation
Use the handle situated in the front panel under the cover to operate the transfer switch.

STEP 6C Padlocking mode
Use the handle situated in the front panel under the cover to operate the transfer switch.

STEP 6C Padlocking mode
Use the handle situated in the front panel under the cover to operate the transfer switch.

STEP 6C Padlocking mode
Use the handle situated in the front panel under the cover to operate the transfer switch.

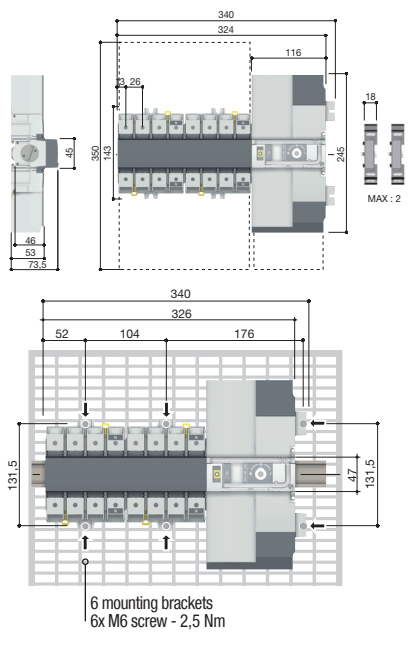
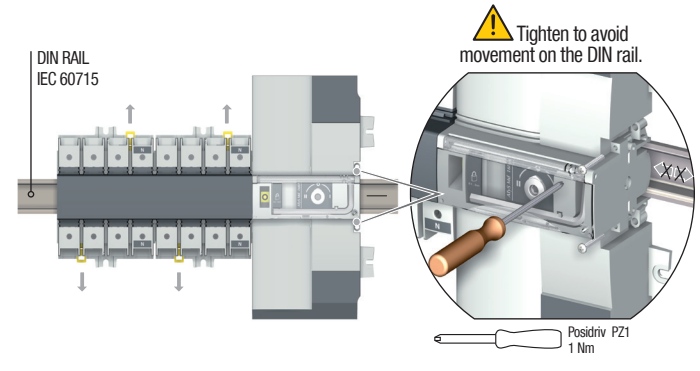
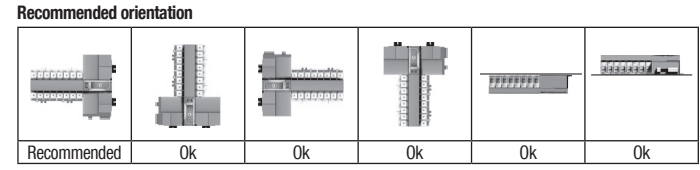
STEP 6C Padlocking mode
Use the handle situated in the front panel under the cover to operate the transfer switch.

STEP 6C Padlocking mode
Use the handle situated in the front panel under the cover to operate the transfer switch.

STEP 6C Padlocking mode
Use the handle situated in the front panel under the cover to operate the transfer switch.

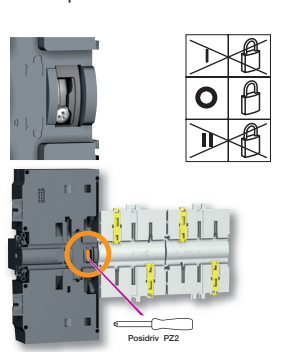
STEP 1 Installation

Caution: Ensure that the product is installed on a flat rigid surface.



Padlocking configuration

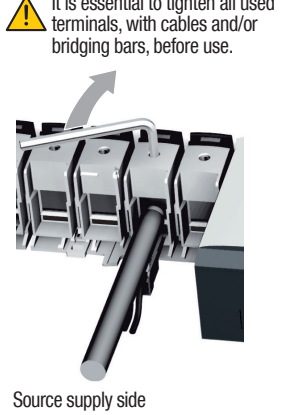
The ATyS M is delivered with padlocking configured to the 0 position.



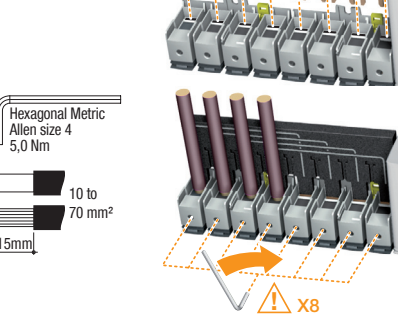
To allow padlocking in all positions (I - 0 - II), configure the ATyS M as follows before installation. (Screw is located at the back of the product).

STEP 2 Power Terminal Connections

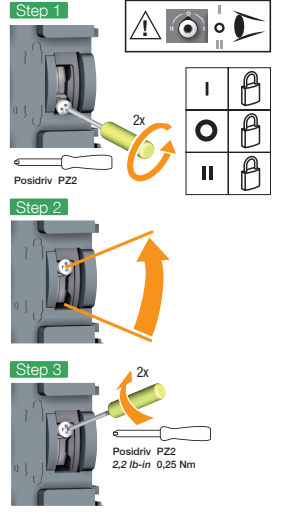
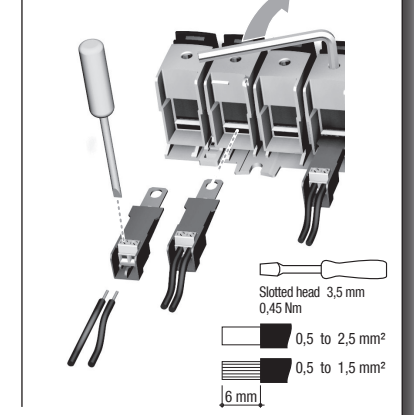
It is essential to tighten all used terminals, with cables and/or bridging bars, before use.



Load side bridging bar.
125A: 1309 4006
160A: 1309 4016

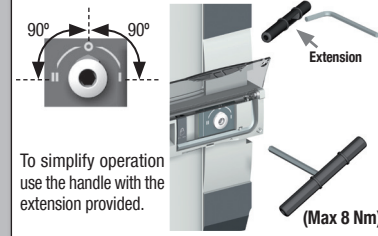


Voltage taps provide 2x ≤ 1.5mm² connections. They can be fitted in any terminals on the source supply side. Do not use on the load side when equipped with a bridging bar.



STEP 6B Manual operation

- Open the front cover as shown to put into manual mode.
- Use the handle situated in the front panel under the cover to operate the transfer switch.
- Check the changeover switch position on the indicator before operating.



STEP 4 Check

Whilst in manual mode, check the wiring and if ok power up the product.

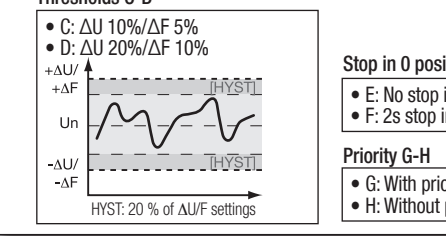
STEP 5 Programming

Auto conf. of the network voltage and frequency.

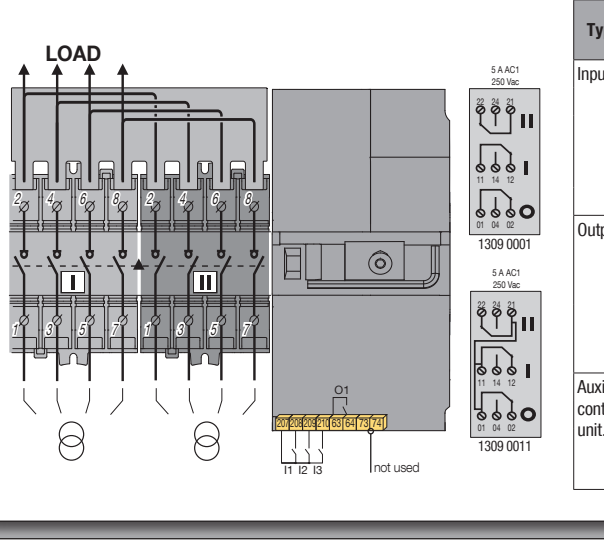
Setting mode A-B
• A: Ready
• B: Auto Conf (Auto-configuration)

- Put dipswitch A-B to position B. (All Led's should be blinking).
- When the LED's become a steady light ON, configuration of the network is ready.
- Put dipswitch A-B back to A.

Set dip switches C-D, E-F, G-H

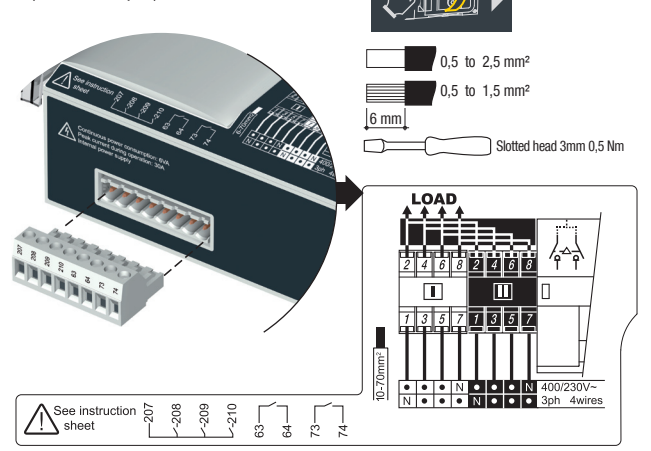


STEP 3 CONTROL / AUX POWER Terminals and wiring

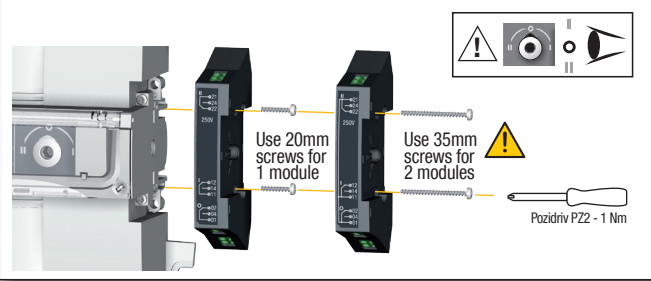


Type	Terminal no.	Description	Characteristics	Recommended connection cross-section
Inputs	207	Common	Dry potential free contact	0,5 to 2,5 mm ² (rigid) 0,5 to 1,5mm ² (stranded)
	208	Position 0 order		
	209	Open SI priority. Closed S2 priority.		
	210	Inhibition ATS		
Outputs	63/64	Open: SI and S2 NOT available. Closed: SI or S2 available	Resistive load 2A 30 Vdc 0.5A 230Vac Pmax: 60W or 125VA Umax: 30Vdc or 230Vac	0,5 to 2,5 mm ² (rigid) 0,5 to 1,5mm ² (stranded)
	73/74	Not used		
Auxiliary contacts unit.	11/12/14	Position I	Dry potential free contact 250Vac 5A AC1 24Vdc 2A	
	21/22/24	Position II		
	01/02/04	Position 0		

Ensure that the product is in Manual Mode (front cover open).



Auxiliary contacts: Fitting of auxiliary contacts: 1309 0001 or 1309 0011
To fit an AC, the switch must first be put in position 0. An auxiliary contact module comprises: one NO/NC changeover contact for each position (I-0-II). To install use the long screws supplied with the module.



www.socomec.com
www.socomec.com/en/atys-t-m
Printing informations: 1 color Black. White paper 90g/m².
Printing size: 420x297. Final size 210x297. This page visible first.
A separate sheet for each language.

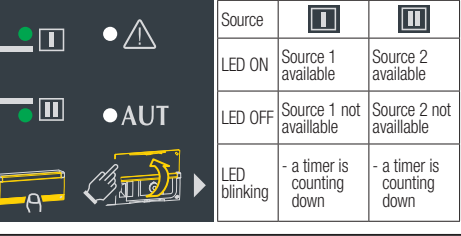
CORPORATE HQ CONTACT:
SOCOMECSAS, 1-4 RUE DE WESTHOUSE, 67235 BENFELD, FRANCE

542930D

Set potentiometer for priority supply "Failure and Return Timer"
FT: 0-30 sec / RT: 0-30 min.



Source availability LED's



Non contractual document.
Subject to change without notice.